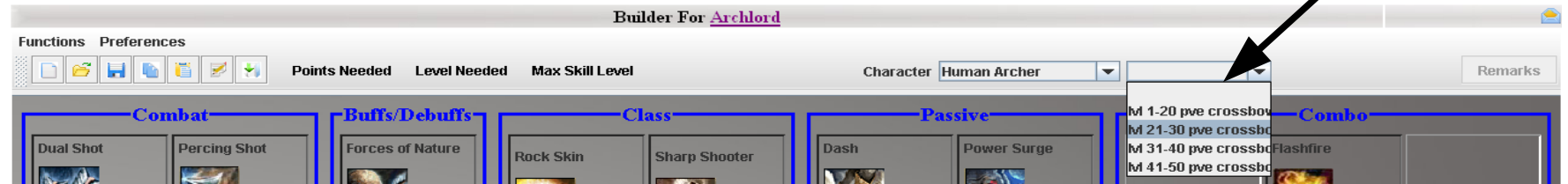


A) Use the default pve build skill

1 . Select a class and after you will have a list of build in the list of the right of the character



2 . When you have select a build (e.g. « Lvl 21-30 pve crossbow »), then all skills of this build are selected with their rank and remarks can be visit



If a skill is selected for the build then the background is orange and the rank is put on the right of the picture

Button change color if a remark can be visit for this build. Click on it to see the remarks.

3 . If you click on the button « Remarks » a window will appears with the remark that you can put when you save a build. This window can be close with a click on the button « OK » or with a press on the escape key.

Builder For Archlord

Functions Preferences

Points Needed : 30/30 Level Needed : 30 Max Skill Level : 30 Character: Human Archer M 21-30 pve cr... **Remarks**

Combat		Buffs/Debuffs		Class		Passive		Combo		
Dual Shot	Percing Shot 5	Forces of Nature	Rock Skin 5	Sharp Shooter	Dash 5	Power Surge		Flashfire		
Magic Arrow	Triple Shot	Animal Soul 5	Wind Arrow	Far Sight	Nimbleness	Intellect	Enervate		Languish	
Chain Action	Blinding Strike	Power Bow					Thunderbolt	Superior Marksmanship	Divine Enhancement	
Fire Shot	Charge Shot	Power Crossbow 4					Assistance		Free Will	
Sniper Shot	Burst Shot	Snare Shot 1				Mana Gain	Arctic Strike	Pressure Blast	Restrain	
Arrow Hail	Phoenix									

Remarks

- * unique crossbow : add some elemental stones (same elemental) in it to hit more damage
- * armor unique : add some stones (M3 if possible) for defense
- * leggings unique : add resistance (M3 if possible)
- * armpads unique : add critical stone (M3 if possible) and speed attack stone (M3 if possible)
- * boots unique : add speed stones and lucky stone (M3 if possible)
- * you can try to make a crit ring (trans or power)

4. If you click on the menu « Summary », the shortcut « CTRL+R » or the picture « Summary », then a window appears with the summary of the actual build. On the top you have all skills group by family and the level need more the number of points. On the bottom you have the remarks if it exist. You can copy all these information in the clipboard with a click on the button « Copy ». You can close this window with a press on the escape key.

You can activate the summary with the menu, the shortcut or the toolbar

The window contains the summary of the actual build. The button « Copy » copy all informations in the clipboard. Escape key to close this window.

The screenshot shows the 'Builder For Archlord' interface. At the top, there are menu options 'Functions' and 'Preferences', and a toolbar with icons for file operations. The main area is a grid of skill icons categorized into 'Combat', 'Buffs/Debuffs', 'Class', 'Passive', and 'Combo'. A 'Summary' window is open in the center, displaying a list of skills and their levels: Percing Shot 5/5, Animal Soul 5/5, Power Crossbow 4/5, Snare Shot 1/5, Rock Skin 5/5, Dash 5/5, and Critical Hit 5/5. Below the list, there are several lines of text providing unique build tips, such as 'unique crossbow : add some elemental stones (same elemental) in it to hit more damage'. A 'Copy' button is located at the bottom of the summary window. Arrows from the text blocks point to the 'Summary' menu item in the toolbar and the 'Summary' window itself.

B) Increase or decrease a rank and see the definition of a skill

- . If you click with the left mouse on the rectangle of a skill then the rank of this skill will increase with a max of 5.
- . If you click with the right mouse on the rectangle of a skill then the rank of this skill will decrease with a max of 0.
- . If a skill have a rank more than 0 then the background of the rectangle will be orange.
- . If you put the mouse on the picture of a skill then a windows appears with the detail of the skill and the rank selected if the skill is orange.

This panel appears when the mouse go above the picture of a skill (e.g. « Power Crossbow »). You can see the definition of the skill and the selected rank

Builder For Archlord

Functions Preferences

Points Needed : 30/30 Level Needed : 30 Max Skill Level : 30 Character Human Archer M 21-30 pve cr... Remarks

Combat

Dual Shot

Percing Shot 5

Magic Arrow

Triple Shot

Chain Action

Blinding Strike

Fire Shot

Charge Shot

Sniper Shot

Burst Shot

Arrow Hail

Phoenix

Buffs/Debuffs

Forces of Nature

Animal Soul 5

Power Bow

Power Crossbow 4

Snare Shot 1

Class

Rock Skin 5

Sharp Shooter

Wind Arrow

Poison Shot

Helpless

Heavy Hand

Passive

Dash 5

Power Surge

Critical Hit 5

Mana Gain

Sure Sight

Combo

Flashfire

Languish

Divine Enhancement

Assistance

Free Will

Arctic Strike

Pressure Blast

Restrain

	Rank 1	Rank 2	Rank 3	Rank 4	Rank 5
Level Needed	8	11	14	17	20
MP Cost	35	40	45	50	55
Cast Time	1.8s	1.8s	1.8s	1.8s	1.8s
Cool Down	432s	456s	480s	504s	528s
Duration	360s	380s	400s	420s	440s
Defense	5	8	11	14	17
Skill Block	4%	10%	16%	22%	28%

C) Save build locally and load or delete it

. You can save the build on your computer and after works on it several time after or shared it with other users of the tool.

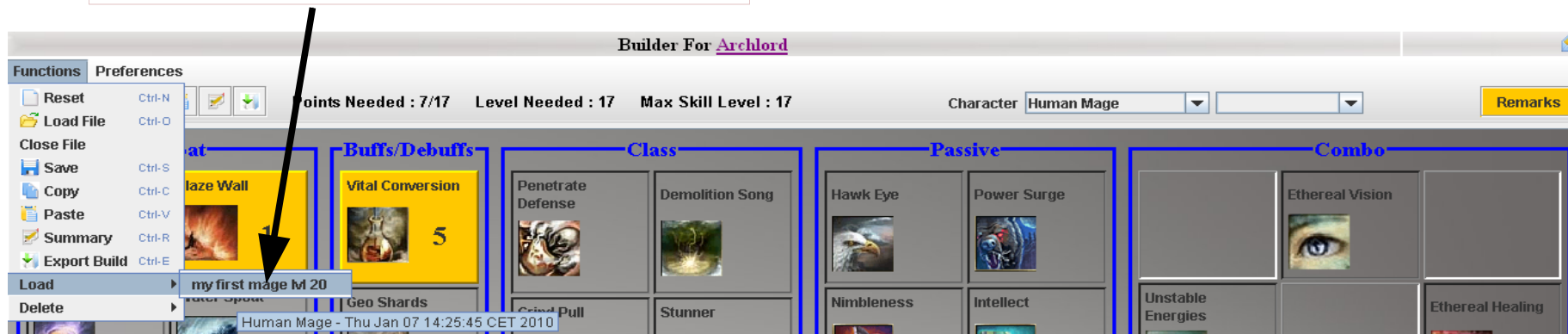
You can save the build locally with the menu « Save », the shortcut « CTRL+S » or the toolbar. Then a window appears to put a description and a remarks

In this window you can put a description for the build and a remark with more information. If you click on « Save » then build will be locally save and if you click on « No » or press escape then you will cancel the save.

The screenshot displays the 'Builder For Archlord' application window. The title bar reads 'Builder For Archlord'. Below the title bar, there are menu options 'Functions' and 'Preferences', a toolbar with icons for file operations, and status information: 'Points Needed : 7/17', 'Level Needed : 17', and 'Max Skill Level : 17'. On the right side, there are dropdown menus for 'Character' (set to 'Human Mage') and 'Remarks'. The main area is a grid of skill icons categorized into 'Combat', 'Buffs/Debuffs', 'Class', 'Passive', and 'Combo'. A dialog box titled 'Description of this key' is open over the grid, containing a 'Description' field with the text 'my first mage lvl 20' and 'need a good staff', and an empty 'Remarks' field. The dialog has 'Yes' and 'No' buttons at the bottom.

. You can load your own build with the menu « Load ». In this menu you have submenu with all your locally's build. If you select one of them then all skill of this build will be selected with the right rank and you will be able to see the remarks

Here the list of the locally's build or the build of the file that you load before



. You can Delete your own build with the menu «Delete ». In this menu you have submenu with all your locally's build. If you select one of them then the build will be delete after your confirmation.

Here the list of the locally's build. If you have open a file then this menu disappear. You will need to make « Close File » action to have the right to delete your locally's build.

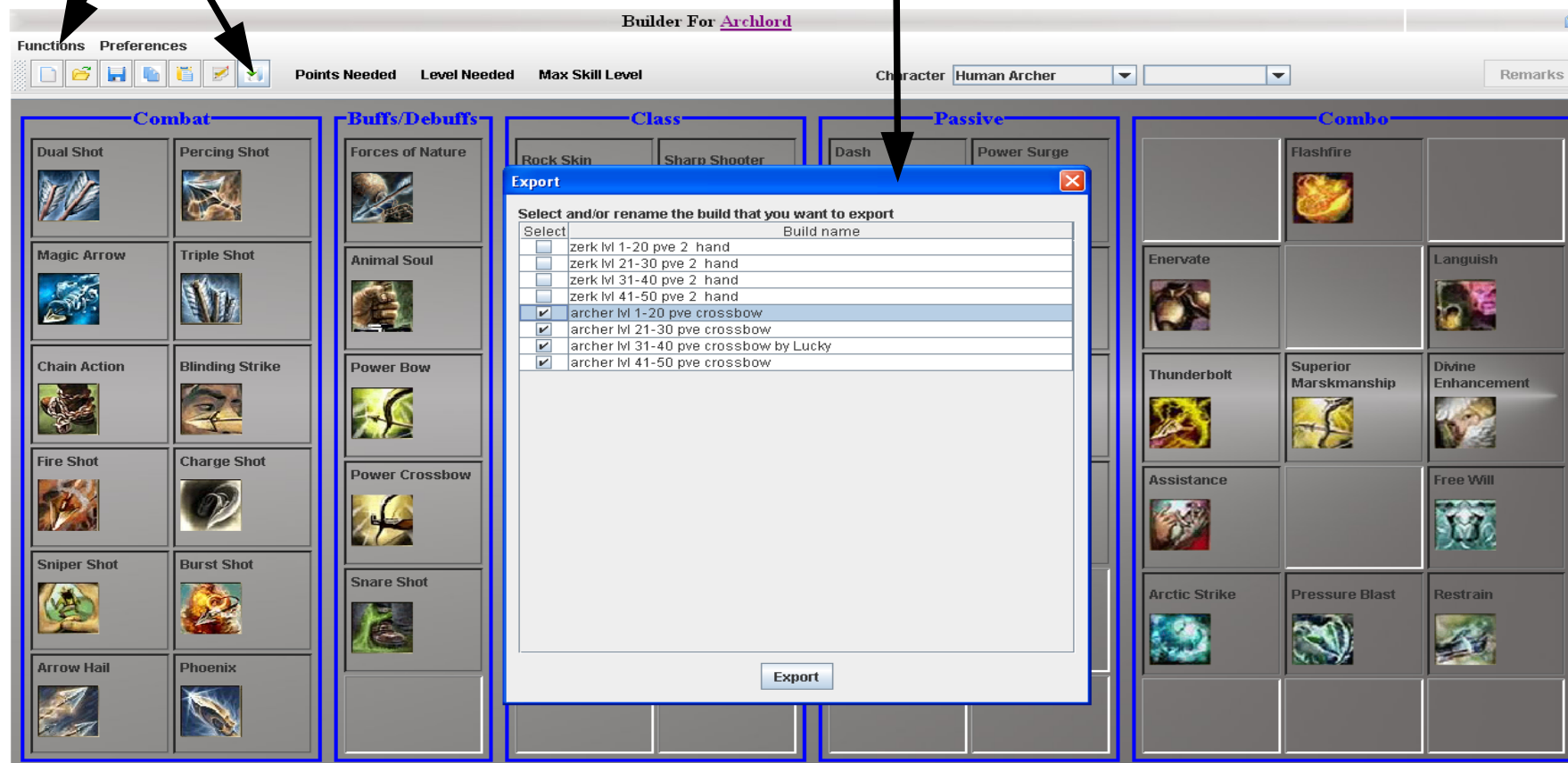


D) Export build in a file

- . You can select some of your locally's build to make a file which can be share with other users of this tool to show a complete build.
- . Use the menu « Export Build », the shortcut « CTRL+E » or the toolbar to open the window where you can select one or more build and the file where you want to store all this information.

You can export the build with the menu « Export Build », the shortcut « CTRL+R » or the toolbar. Then a window appears to select your build.

In the first column, you can select which build you want to export. If you click on the second column then you can update the name of the build.
If you click on the « Export » button then a window will appear to choose the location and the file name of the export.
If you press escape key then the window close without export

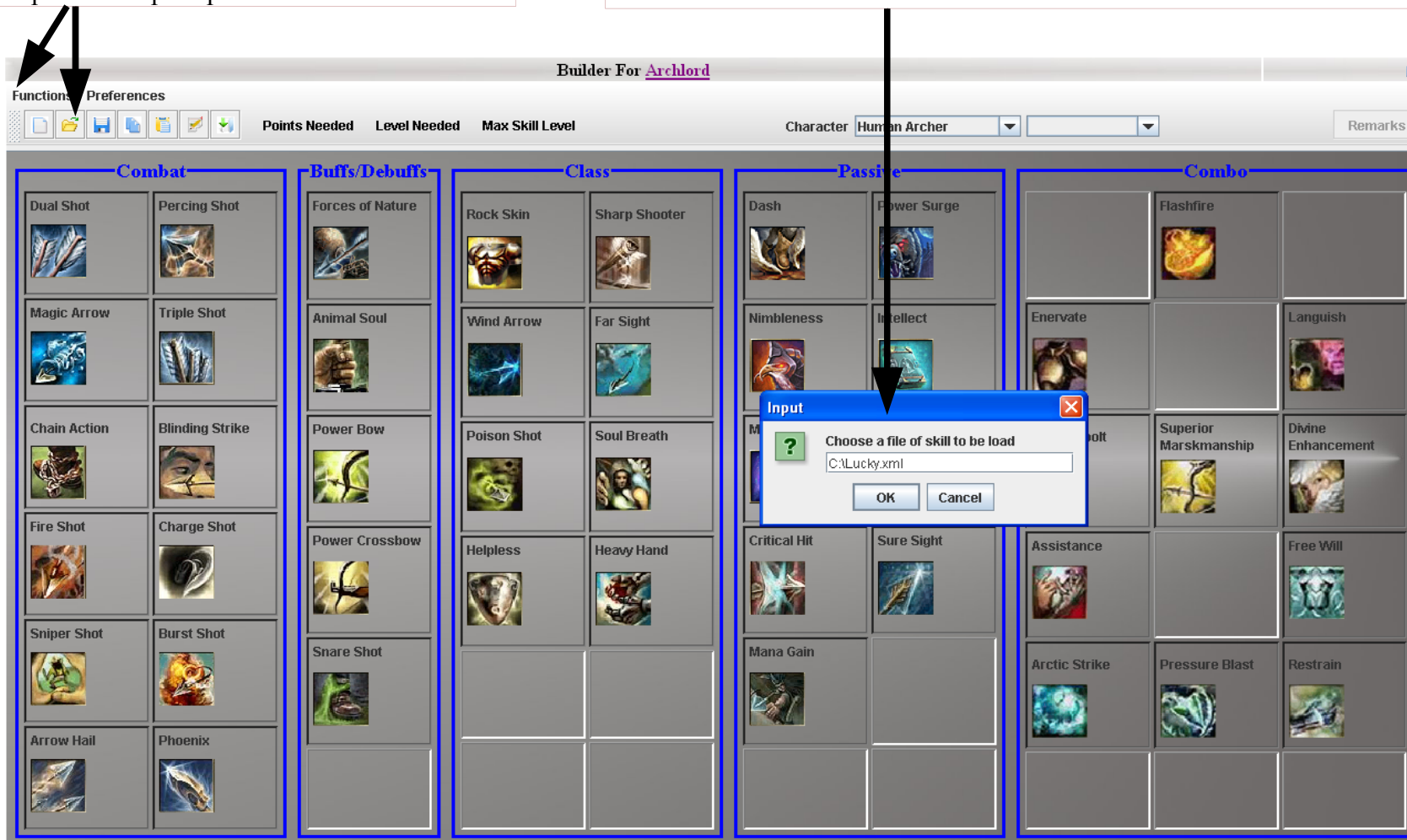


E) Import a file which contains some build.

- . You can load a file from your computer or from the network. This file must contains build so must be generated by the archlordBuild tool. For example i have locally a file with the name « Lucky.xml » on my drive C:. This file was generated by an export.
- . First you use the menu « Load File », the shortcut « CTRL+O » or the toolbar to open a window.
- . Then you put the folder and the file name (e.g. «C:\Lucky.xml ») or the network's link (e.g. « <http://archlordBuild.free.fr/fullBuild/pvezerklv11-50.xml> »)

You can load a file with the menu « Load File », the shortcut « CTRL+O » or the toolbar. Then a window appears to put the complete path.

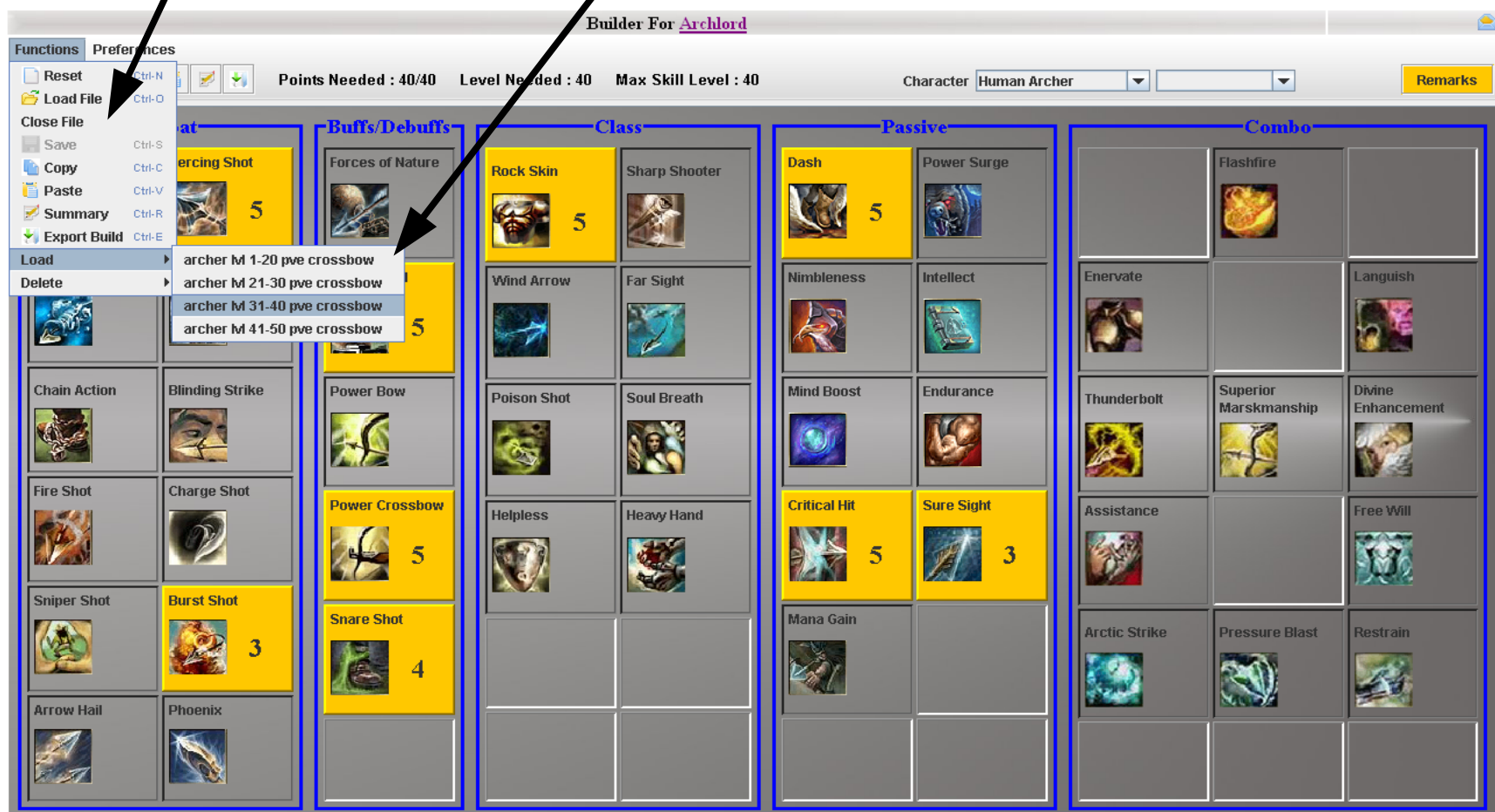
Put here the complete path (local or remote path) and when you click on the button « OK » then all data store in this file will be load in memory



- . When a file is load then the option « Save » and « Delete » are disable. You need to use the function « Close File » in the menu to be able to work on your locally's build. But you can load a file, select a build in it, close the file and then the build won't disappear and you could work on it locally with the save option.
- . You can select all build in the menu « Load ».

The menu « Save » is disable and the menu « Delete » haven't anymore submenu. You need to make « Close File » to release these options.

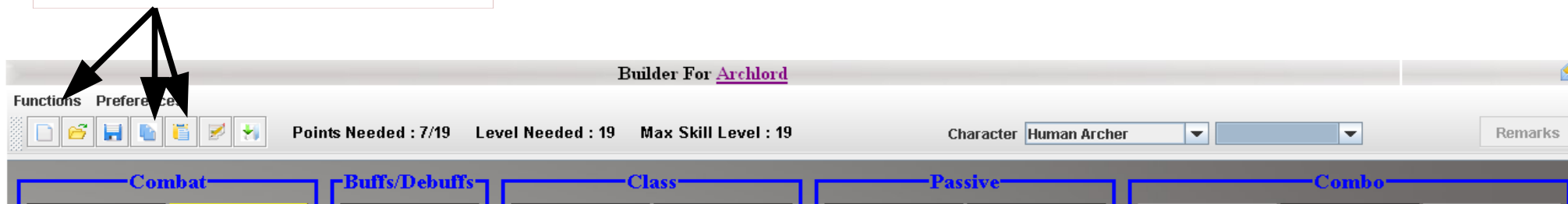
Here the list of the build of the file that you load before



E) Copy and paste key

. You can copy and paste a key from the clipboard. The key allows you to exchange with others player a shortcut for a specific build without remarks. This shortcut can be used with the builder online and the builder offline.

For copy a key you can use the menu « Copy », the shortcut « CTRL+C » or the toolbar.
For paste a key you can use the menu « Paste », the shortcut « CTRL+V » or the toolbar.



Tips : The structure of the key is « key=..... ». You can paste a file with the structure « file=... ». For example to load the remote's file « <http://archlordBuild.free.fr/fullBuild/pvezerklv11-50.xml> » you can use the « Load File » or paste the following sentence :
file=<http://archlordBuild.free.fr/fullBuild/pvezerklv11-50.xml>

F) Need help or anything else

Send me an email to archlordBuild@free.fr